

Department of Agriculture, Uttarakhand

- Agriculture in Uttarakhand
- Departmental Setup
- Basic Activities
- Schemes
- New Initiatives

By

D. Kumar,

Chief Agriculture Officer, Almora

Agriculture in Uttarakhand

- 3 Seasons
- Kharif Season - Rice, Maduva, Soybean, Maize, Urd etc.
- Rabi Season- Wheat, Barley, Oil seed, Gram, Lentil, etc.
- Zaid Season – Moong, Maize, Summer Rice.

- Horticultural Crops- Pear, Plum, Peach, Apple, Litchi, Mango, Tomato, Potato, Ginger, Turmeric and Flowers.
-

Share Of Agriculture Sector in GDP

- Year 2011-12
- Agriculture and Allied- 16.38 %
- Industries – 29.34%
- Service Sector-54.27%

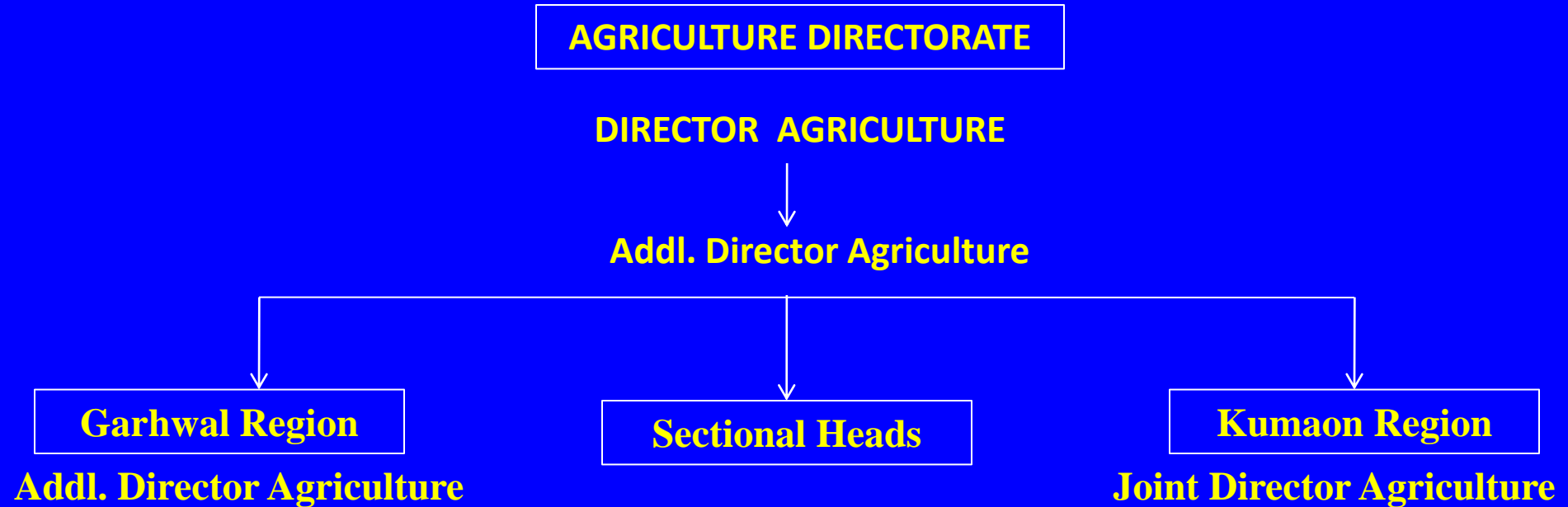
- Year 2020-21
- Agriculture and Allied – 20.19%
- Industries – 25.92%
- Service Sector-53.89%

- (60% Population of the country involved in Agriculture Activities.)

Food Grain Production

- In Year 1950 - 50.82 Million Tonnes
- In Year 2021-22 - 315.7 Million Tonnes
- Same scenario in milk production, fruits and vegetables, poultry, fish and other allied sectors.

Administrative Structure (Department of Agriculture)



- Finance Controller
- Joint Director Agriculture (Statistics)
- Joint Director Agriculture (Quality Control Labs, Seed/ Fertility/ Pesticides/ IPM labs)
- Joint Director Agriculture (Organic)
- Joint Director Agriculture (Planning & Monitoring)
- Deputy Director Agriculture (Technical Audit)
- Deputy Director Agriculture (HR & training)
- Deputy Director Agriculture (Marketing)

Regional Head	Additional Director Agriculture (1) – Garhwal Region Joint Director Agriculture (1) –Kumaon Region
District Level	Chief Agriculture Officer (13) Plant Protection Officer (13)
Unit Level	Agriculture & Soil Conservation Officer (35)
Block Level	Assistant Agriculture Officer Group-1 (95) Assistant Agriculture Officer Group-2 (95)
Nyaya Panchyat Level	Assistant Agriculture Officer Group-2 &3 (670)

Other Sections of the Department

Regional Soil Testing Labs - There are 02 Regional Labs

1. Regional Soil Testing Lab, Srinagar for Garhwal Region.
2. Regional Soil Testing Lab, U.S. Nagar for Kumaon Region.

District Soil Testing Labs - 13

State Seed Testing Lab, Dehradun - To provide quality seeds to the farmers 01 State Seed Testing Lab is established.

Regional Agriculture Testing & Demonstration Station, Haldwani –

- To conduct trial of various crop varieties.
- To test productivity of different crop varieties.

IPM Lab - Two labs are established in Uttarakhand.

1. IPM Lab, Bhimtal, Nainital
2. IPM Lab, Dehradun.

Departmental Activities

The aim of the department is to increase production and productivity of various field crops. To achieve the goal we have to conduct various activities such as to provide quality agriculture inputs, to conserve soil from erosion, water harvesting, soil testing and increase nutrient status of soil.

Departmental Activities

Agriculture Inputs distribution:

- **Seeds :- To provide high yielding varietal seeds.**
- **Fertilizers :- Through co-operative stores and private retailers.**
- **Micro Nutrients :-**
- **Plant Protection Measures :- Chemical and Bio control agents.**
- **Bio Fertilizer :-**
- **Agricultural Implements :-**
- **Agriculture Loan :- KCC**
- **Crop Insurance :-**

Departmental Activities

- **Soil and Water Conservation Works :-**
- **Drainage Line treatment (Check Dam, Retaining Wall etc.)**
- **Water Harvesting Structures (Roof Rain water Tanks, Irrigation Tank, Recharge Pits. Dug out ponds, earthen ponds etc.).**
- **Increase Irrigation Potential (Cemented Check Dams, Irrigation Channels).**
- **To implement water shed projects.**

Departmental Activities

Demonstration :- Extension of new agriculture technologies .

- High Yielding Varietal Trials.
- IPM trials.
- Cluster Demonstration .
- Demonstration of Agriculture Implements.

Training & Exposure Visits :- Training of farmers in various agricultural activities/ technologies.

- Farmers *Goshties* at village level.
- Farmers training at block level.
- Farmers training at district level.
- Farmers training at state and inter state level.

Farm Schools :- Farm schools are established in farmers field itself.

Other Activities

- Quality Control
- Seeds
- Fertilizers
- Pesticides
- Area and Production assessment
- Crop cutting test
- Padtal