



Gram Panchayat Development Plan

Sabki Yojana, Sabka Vikas



Aug 20, 2018

Agenda

1

GPDP Implementation issues

2

Base Data for Planning & Additional Source of Data

3

Mapping of MA Parameters with 14th FC, 29 Sectors

4

Gap Identification

5

Identification of critical sectors

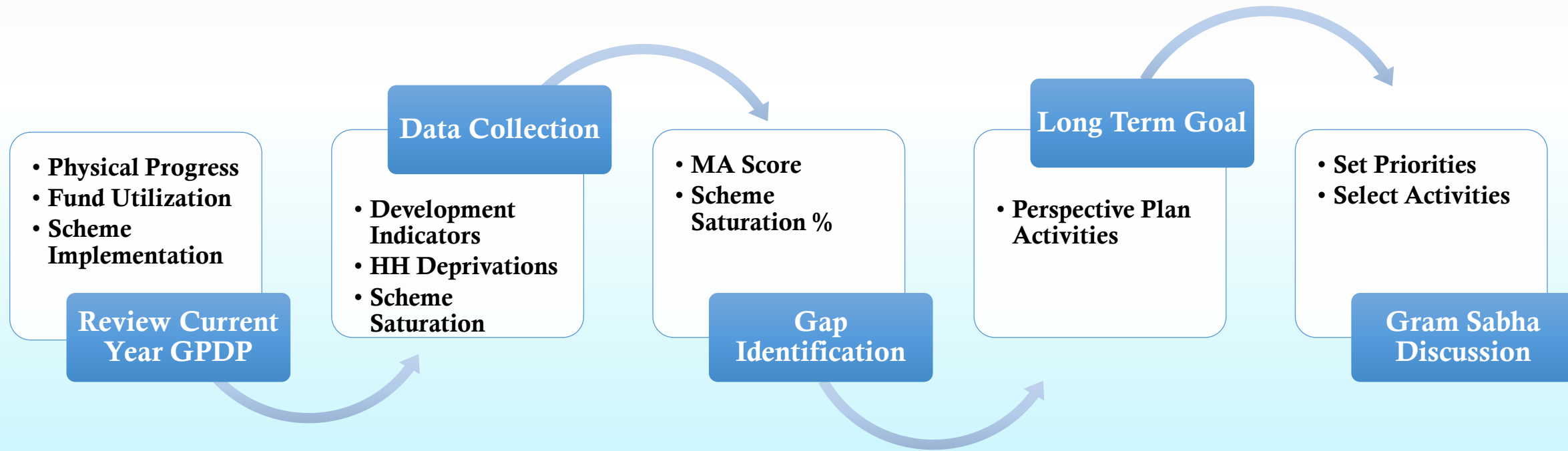
6

Way Forward/ Implementation

GPDP Implementation Issues

- **Lack of awareness generation and participatory planning for GPDP**
- **No concern for financial resource envelope**
- **Lack of technical support to GPs for GPDP preparation**
- **No relation between GPDP and works actually undertaken**
- **Miniscule presence of major sectors like Agriculture, WCD, Health and Nutrition, Education, Animal Husbandry, Skill development etc.**
- **Departments working in isolation**
- **Review of GPDP at Block/ District/ State levels non-existent**
- **Uploading of GPDPs not done/ partial**

GPDP Creation Process



Review / Assessment Of Current Year Plan

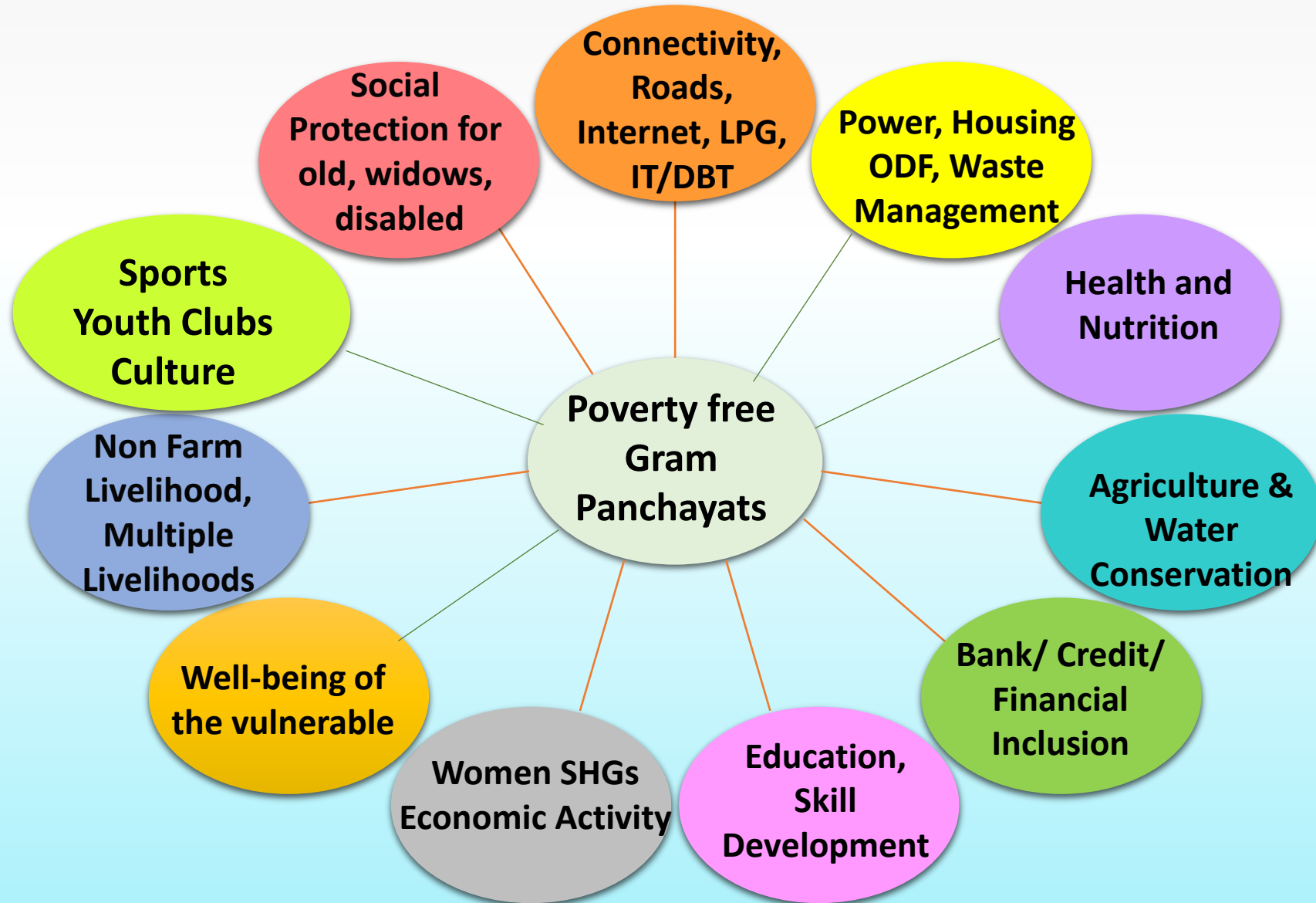
- **Activity wise Status Report**
 - **Completed/ In-Progress/ Not Started**
- **Funds Allocated vs. Funds Utilized**
- **Planned Timelines vs. actual Timelines**
- **Validation Of completed activities in Gram Sabha**
- **Review Impact of Activity On GP**
- **Identifying the activities**
 - **To be shifted/ Continued in the next Year**
 - **To be discontinued/ dropped**

Data Inputs for Planning

- First Phase of Mission Antyodaya is already done and data for 44108 GPs has been collected
- SECC 2011 data is already available which is further mapped with LGD Directory
- Scheme Implementation
 - MoRD Schemes data to be pre-populated from Gram Samvad
 - Other Scheme Data to be arranged by respective Frontline workers. After validation in Gram Sabha, may also be captured in PlanPlus
- Long Term(Perspective) Plan Of the GP
- Budget Allocation (FFC, SFC, Scheme Budget)
- Own Resources

Base Data for GPDP			
#	MA Development Parameters	SECC Data	Additional Sources of Data
1.	Infrastructure, Economic Development & Livelihoods, Health Nutrition & Sanitation, Women Empowerment and Financial Inclusion	Socio Economic parameters such as Housing/Dwelling, Employment, Income, Asset, Agriculture, Land Related	MoRD & other Ministry Schemes such as GSA, PMAY-G, PMUY, DDUGJY, UJALA ICDS and many more

GPDP: Themes for Poverty Free Gram Panchayats



Action Points

- **Collection of Mission Antyodaya data of Remaining GPs**
- **Mission Antyodaya Data collected to be validated in Special Gram Sabha during People's Plan Campaign**

Mapping of Mission Antyodaya Parameters with XIth Schedule, 29 Sectors (1/4)

29 Sectors in FFC XIth Schedule		Mission Antyodaya Development Parameters	MoRD Schemes	Other Ministry Schemes
1	Agriculture.	% households engaged exclusively in	10	RKVY
		A. Farm activities		e-NAM
		B. Non-farm activities		PMFBY
		Availability of government seed centres (yes-1;No-2)	35	NFSM
				DDUGJY
2	Land Improvement.	Total Area(in hectares)		PKVY
		Net sown Area(In hectares)		SHC
		Total Un irrigated land area (in hectare)		DILRMP
		Area irrigated (in hectare)		
		Availability of soil testing centres (Yes-1;No-2)	34	
		Availability of fertilizer shop (yes-1;No-2)	36	
3	Animal Husbandry.	Number of households supported by village based Livestock Extension Workers	47	
4	Rural Housing.	No of household with kuccha wall and kuccha roof	25	PMAY-G
		Kutcha Wall is ... 1 Grass/thatch/bamboo etc.		
		2 Plastic/polythene		
		3 Mud/unburnt brick		
		4 Wood		
		5 Stone not packed with mortar		
		Kutcha Roof Is... 1 Grass/thatch/bamboo/wood/mud etc.		
		2 Plastic/polythene		
		3 Hand made tiles		
5	Drinking Water	Availability of Piped tap water	22	NRDWP
		(1) 100% habitations covered (2) 50 to 100% habitations covered (3) <50% habitation covered		
		(4) only one habitation is covered (50 Not Covered		

Critical
 High
 Medium

Mapping of Mission Antyodaya Parameters with XIth Schedule, 29 Sectors (2/4)

29 Sectors in FFC XIth Schedule		Mission Antyodaya Development Parameters	MoRD Schemes	Other Ministry Schemes	
6	Roads	Whether the village is connected to All weather road (Yes-1;No-2)	15	MGNREGA	
		Whether village has an internal cc/ brick road (Yes-1;No-2)	16	PMGSY or RC	
		Availability of Public Transport (Bus-1;Van-2;Auto-3;None-4)	17	SAGY	PMAGY
			17		
7	Rural Electrification	Availability of electricity for domestic use (1-4 hrs-1; 5-8 hrs-2; 9- 12 hrs-3; >12 hrs-4; No electricity-5)	19	GSA	UJALA
					IPDS
					DDUGJY
				GSA	Saubhagya
8	Non-conventional energy	Total no of household using clean energy (LPG/Bio gas)	24		
9	Poverty alleviation programme	Number of households mobilized into SHGs	44	DAY-NRLM/NRUM	MDMS
		Number of households mobilized into Producer Groups (PGs)	45		
		Number of households supported by village based Agricultural Extension Workers	46		
		No of SHGs accessed bank loans	48		
		Total Number of SHGs Promoted			
10	Education	Availability of school (Primary-1; Middle School-2; High School-3; Senior Secondary school-4;No school-5)	27		ICDS
					SSM
11	Vocational education.	Availability of Vocational Educational centre/ITI/RSETI /DDU-GKY (Yes-1;no-2)	28	DDU-GKY	PMKVY
12	Markets and fairs.	Availability of markets (Mandis-1; Regular market-2; weekly haat- 3; none-4)	21		
13	Health and sanitation.	Availability of Sub centre /PHC/CHC (PHC-1; CHC-2; Sub Centre-3, None=4)	29	Swachh Bharat Mission	NRHM/NHM
		If not available in the village; the distance range code of the nearest place where facility is available is given; (<5km-1; 5-10 km-2; >10 km-3)	30	GSA	NRDWP
		Availability of Veterinary Clinic Hospital (Yes-1;No-2)	31		Mission Indradhanush
		If not available in the village; the distance range code of the nearest place where facility is available is given; (<5km-1; 5-10 km-2; >10 km-3)	32		ICDS
		Availability of drainage facilities (Closed drainage-1; open pucca drainage covered with tiles slab-2; open pucca drainage uncovered-3; open kuccha drainage-4; no drainage-5)	33		
		Community waste disposal system (Yes-1;No-2)	37		
		Community bio gas or recycle of waste for production use (yes- 1;No-2)	38		
		Is the village Open Defacation Free(ODF) (Yes-1;No-2)	39		

Critical
 High
 Medium

Mapping of Mission Antyodaya Parameters with XIth Schedule, 29 Sectors (3/4)

29 Sectors in FFC XIth Schedule		Mission Antyodaya Development Parameters	MoRD Schemes	Other Ministry Schemes	
14	Women and child development.	Availability of Aanganwadi Centre (Yes-1;No-2)	40	GSA	Mission Indradhanush
		No of total children in the age group of 0-3 years	41		MDMS
		No of children aged 0-3 years registered under Aanganwadi	42		BBBP
		No of children aged 0-3 years immunized			ICDS
		No of children categorized as Non-Stunted as per ICDS record	43		
15	Social welfare.	Availability of banks(Yes=1, No=2)	11	SAGY	NRDWP
		If not available in the village; the distance range code of the nearest place where facility is available is given; (<3 km-1; 3-5km- 2; 5-10 km-3, >10Km-4)	12	NULM	PMKKKY
		If bank not available in the village; Availability Of bank/Business Correspondent with internet connectivity?	13		PMAGY
		Availability of ATM (yes-1;No-2)	14		
		Availability of Post office/Sub-Post office (Yes-1;No-2)	26		
		Availability of telephone services (Landline-1; Mobile-2; Both-3;None-4)	23		
		Availability of Internet Café/Common Service Centre (Yes-1;No-2)	18		
16	Public distribution system.	Availability of Public Distribution System (PDS) (Yes-1;No-2)	20		

Mapping of Mission Antyodaya Parameters with XIth Schedule, 29 Sectors (4/4)

29 Sectors in FFC XIth Schedule		Mission Antyodaya Development Parameters		MoRD Schemes	Other Ministry Schemes
17	Maintenance of community assets				
18	Family welfare			GSA	PMUY
				GSA	PMJDY
				GSA	PMKKKY
				GSA	UJALA NRDWP
19	Welfare of the weaker sections			NSAP	
				GSA	PMSBY
				GSA	PMJJBY
20	Minor Irrigation			HKKP	
				PMKSY/IWMP	
21	Fisheries				
22	Social Forestry				
23	Minor Forest Produce				
24	Small scale industries				PMEGP
25	Khadi, village and cottage industries				PMEGP
26	Fuel and fodder				
27	Adult and non-formal education				
28	Libraries				
29	Cultural activities				

Critical
 High
 Medium

Gap Identification and Gram Sabha Discussion

- **Based on the available inputs PlanPlus may report the Gaps in**
 - **Development Indicators - For Mission Antyodaya Parameters the Goal should be to achieve a GP score of 75 or higher**
 - **Scheme Implementation - Scheme implementation target should be 100% Saturation**
- **For the Gaps Validated by the Gram Sabha, it may identify the reasons for the Gaps and proposed interventions**
- **Gram Sabha may also capture additional Problems/Gaps in any of the 29 sectors along with proposed interventions**
- **The identified Gaps may be categorized as Critical, Moderate and Minor**

Critical Sector/Activities

Critical Sectors	Activities Identified	Funding Contribution				
		Funds Detail	14th Finance Commission	State budget	Own Sources	Others
Maintenance of community assets	Nil	Funds Provisioned				
		Expenditure made				
Family welfare	Nil	Funds Provisioned				
		Expenditure made				
Welfare of the weaker sections	2	Funds Provisioned	78,321	12,349	8,745	Nil
		Expenditure made				
Minor Irrigation	3	Funds Provisioned	12,786	9,899	6,785	7,787
		Expenditure made				
Fisheries	1	Funds Provisioned	78,321	12,349	8,745	Nil
		Expenditure made				
Social Forestry	Nil	Funds Provisioned				
		Expenditure made				
Minor Forest Produce	Nil	Funds Provisioned				
		Expenditure made				
Small scale industries	Nil	Funds Provisioned				
		Expenditure made				
Khadi, village and cottage industries	Nil	Funds Provisioned				
		Expenditure made				
Fuel and fodder	Nil	Funds Provisioned				
		Expenditure made				
Adult and non-formal education	Nil	Funds Provisioned				
		Expenditure made				
Libraries	Nil	Funds Provisioned				
		Expenditure made				
Cultural activities	Nil	Funds Provisioned				
		Expenditure made				

Creation Of Plan

- **For the identified Gaps, projects/activities are planned. The output of the project/activity is-**
 - **Asset Creation**
 - **Asset Maintenance**
 - **Providing Inputs to the schemes(Both Central and State).**
 - **Community Mobilization (No Cost Activity) for**
 - **Social harmony**
 - **Creating awareness on social issues and schemes etc.**
- **Activities related to delivery of basic civic services such as water supply, sanitation including septic management, sewage and solid waste management, storm water drainage, maintenance of community assets, maintenance of roads, footpaths, street-lighting, burial and cremation ground etc. only to be planned from FFC allocation**
- **Long term projects may have multiple activities scattered across different annual plans**

Key Guidelines for Preparation Of Plan

- **Planning process to target critical sector and critical Gaps identified for development**
- **Process begins with the structuring of Interventions for identified Gaps/ problems and converting them into measurable units**
- **Cost based activities should be planned only as per availability of funds**
- **Activity funding can be shared by multiple schemes**

Publication Of GP Plan

- **Once the data entry for the plan is completed, and the plan is approved, the final plan in PDF format is published on the PlanPlus Public portal**
- **The hard copy of the Plan is to be kept in GP office for public disclosure**
- **The Asset Creation Activities Of GPDP are published on Public Information Board at the beginning of the Implementation Year**

Challenges

- **The process is too much dependent on Data from Multiple sources.**
- **Any Delay in Mission Antyodaya data collection for the GP may affect the GPDP process also.**
- **Centrally Getting Data for Other Ministry schemes may not be feasible because of mismatch of location directories. Thus data collection for other schemes will depend on Frontline workers in block/GP**

THANK YOU